



THERMAL OIL HEATER

TOH SERIES

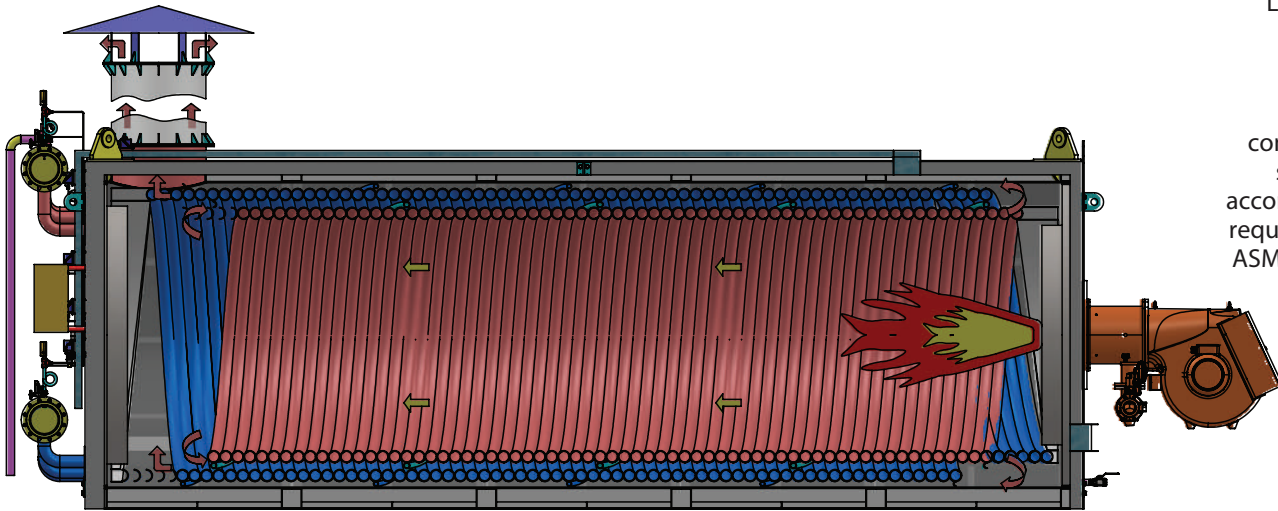
Capacities from 1,7 to 23,9 MBTU/H
Pressure max 120 PSI

THERMAL OIL HEATER
Efficiency, Reliability and Durability



- High performance
- Easy operation
- High safety level
- Easy maintenance

SECTION VIEW



Inspected by
LLOYDS, SGS

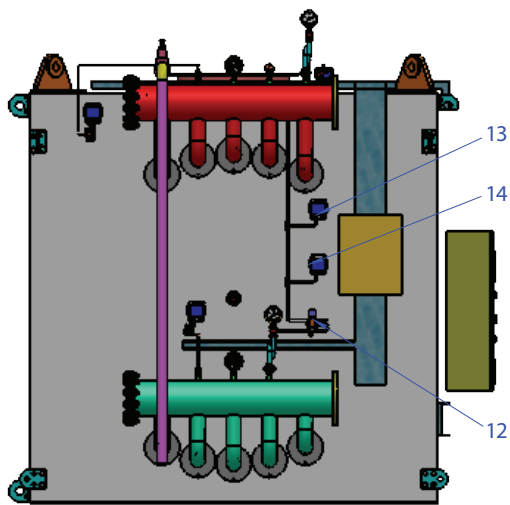


Designed,
constructed and
stamped in
accordance with the
requirements of the
ASME Boiler Codes.

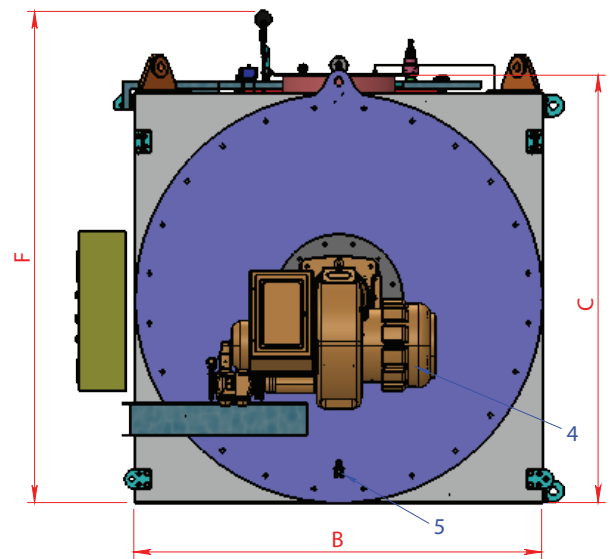
TECHNICAL DATA

MODEL	Output	Design Pressure	Dimensions (Inch)			Connections		
			A	B	C	Flow & Return	Safety Vent	Flue OD
TOH500	1,7	120	49.8	137.5	53.8	DN80 (3" NPS)	DN25 (3/4" NPS)	DN250 (10")
TOH750	2,6	120	49.8	157.5	53.8	DN100 (4" NPS)	DN32 (1 - 1/4" NPS)	DN300 (12")
TOH1000	3,4	120	70.4	177.5	70.4	DN100 (4" NPS)	DN32 (1 - 1/4" NPS)	DN300 (12")
TOH1500	5,1	120	78.7	214.5	83.7	DN125 (5" NPS)	DN40 (1 - 1/2" NPS)	DN400 (16")
TOH1750	6,0	120	86.6	220.5	90.5	DN125 (5" NPS)	DN40 (1 - 1/2" NPS)	DN400 (16")
TOH2000	6,8	120	87.6	242.7	91.7	DN125 (5" NPS)	DN40 (1 - 1/2" NPS)	DN400 (16")
TOH2500	8,5	120	87.6	267.1	91.7	DN125 (5" NPS)	DN50 (2" NPS)	DN500 (20")
TOH3000	10,2	120	87.6	267.1	91.7	DN125 (5" NPS)	DN50 (2" NPS)	DN500 (20")
TOH3500	11,9	120	87.6	295.5	92.8	DN150 (6" NPS)	DN50 (2" NPS)	DN600 (26")
TOH4000	13,6	120	87.6	295.5	92.8	DN150 (6" NPS)	DN50 (2" NPS)	DN600 (26")
TOH5000	17,1	120	101	365	105	DN200 (8" NPS)	DN65 (2 x 2-1/2" NPS)	DN600 (26")
TOH6000	22,2	120	122.4	393.7	134.5	DN200 (8" NPS)	DN65 (2 x 2-1/2" NPS)	DN750 (28")
TOH7000	23,9	120	122.4	393.7	134.5	DN200 (8" NPS)	DN65 (2 x 2-1/2" NPS)	DN750 (30")

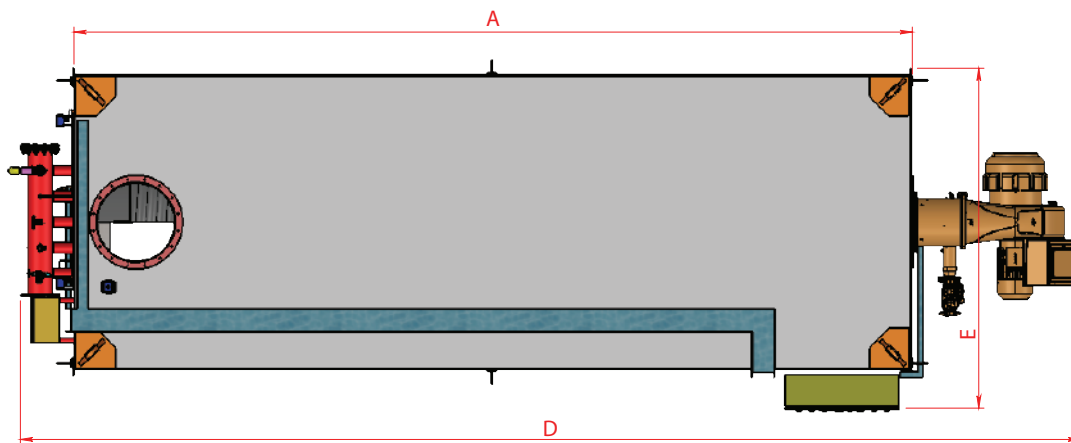
TECHNICAL DRAWINGS



BACK VIEW



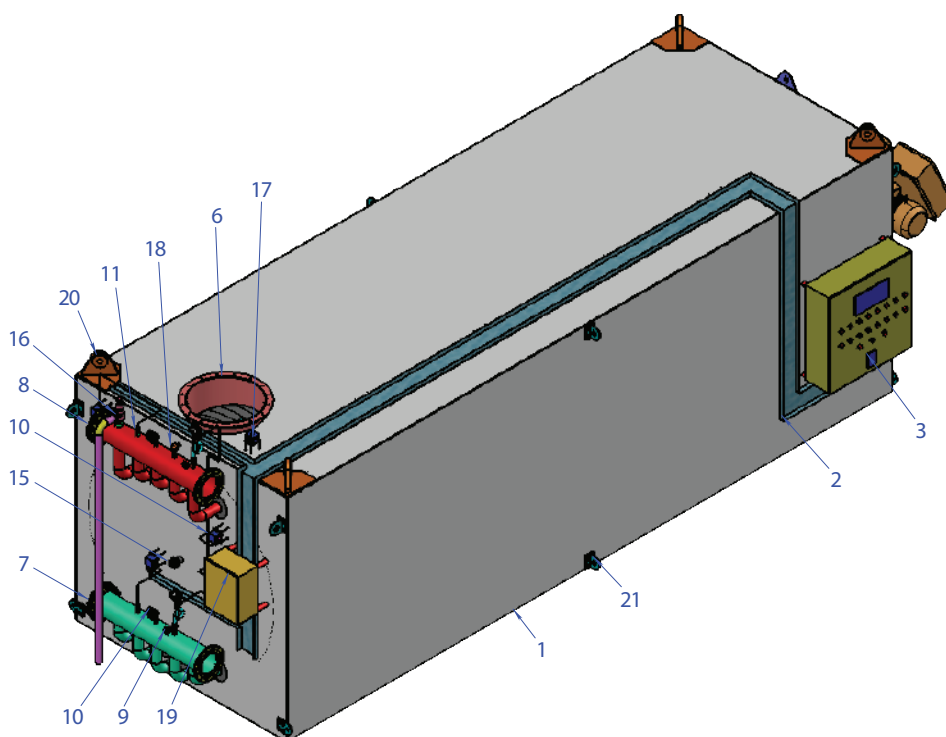
FRONT VIEW



TOP VIEW

ANNOTATION:

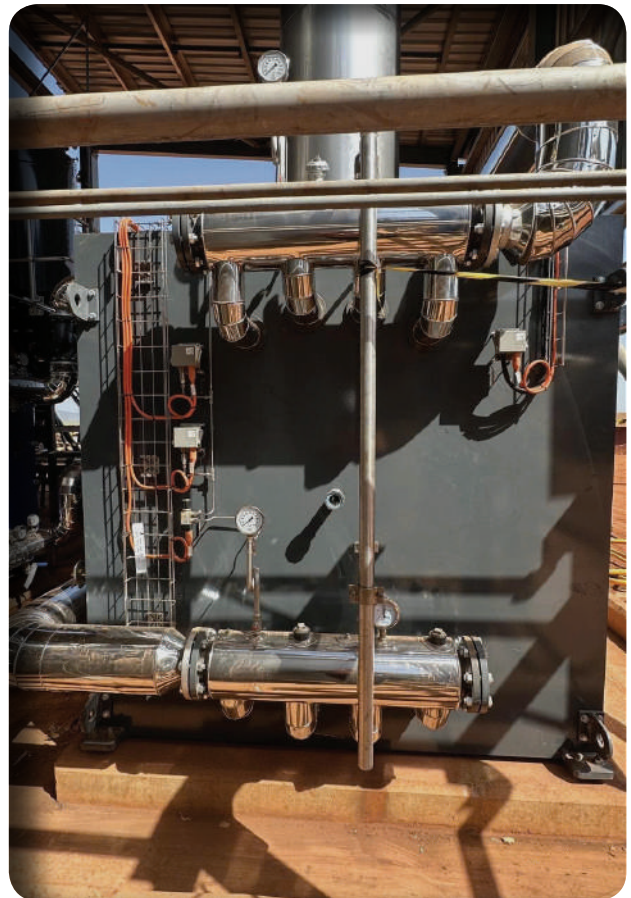
1. Thermal oil heater
2. Cable tray
3. Control panel
4. Burner
5. Condensate valve
6. Exhaust flue
7. Oil inlet piping
8. Oil outlet piping
9. Syphon loop & pressure gague
10. Temperature gague
11. Over temp switch
12. Differential pressure switch
13. High oil pressure switch
14. Low oil pressure switch
15. Burner sighting port
16. Safety valve
17. Stack over temp switch
18. RTD
19. Junction box
20. Lifting lug
21. Lashing lug



PRODUCT OVERVIEW

- Efficient 3 - Pass Design
- Flexibility - Capable of burning natural gas, fuel oil, digester gas, hydrogen, & various other gaseous fuels
- ASME Code Constructed & Stamped
- Competitively Priced, Easily Maintained, Designed for Efficiency
- Large Furnace Volume for Ultimate Combustion Efficiency
- Low Heat Release
- Factory Insulated - 3" Mineral Wool
- Factory Jacketed & Stainless Steel
- Easy to maintaining and operating
- Ample Waterside Clean - Out Openings
- Fully Automatic Operation
- Wet Back Construction
- Factory Test Fired
- Flame Observation Ports Front & Wetback

These steam boilers provide a large thermal mass and can therefore supply a significant volume of steam draw-off whilst still maintaining a stable operating environment. In essence, these firetube steam boilers are excellent for any industry that needs high quantities of steam at different times, which when the steam is drawn-off, it won't affect the boilers operations (such as foam manufacturing and abattoirs). All units are factory packaged with operating controls, relief valves, burner and fuel train. Installation is made simple in that only service connections are needed to place in operation. Flexible burner systems are available for firing natural gas, LP gas, #2 oil, heavy oil, or combinations. High density 3" mineral wool insulation assures lower radiant heat loss.



CONTACT US

Address: 150C, Ho Hoc Lam Street, An Lac Ward, Ho Chi Minh City, Viet Nam
Email: info@hongnhutco.com
Website: www.hongnhut.com
Tel: +84 9 1313 6592

