



# THERMAL & REFRIGERATION ENGINEERING CO., LTD



## THERMAL OIL HEATER

### TOH SERIES

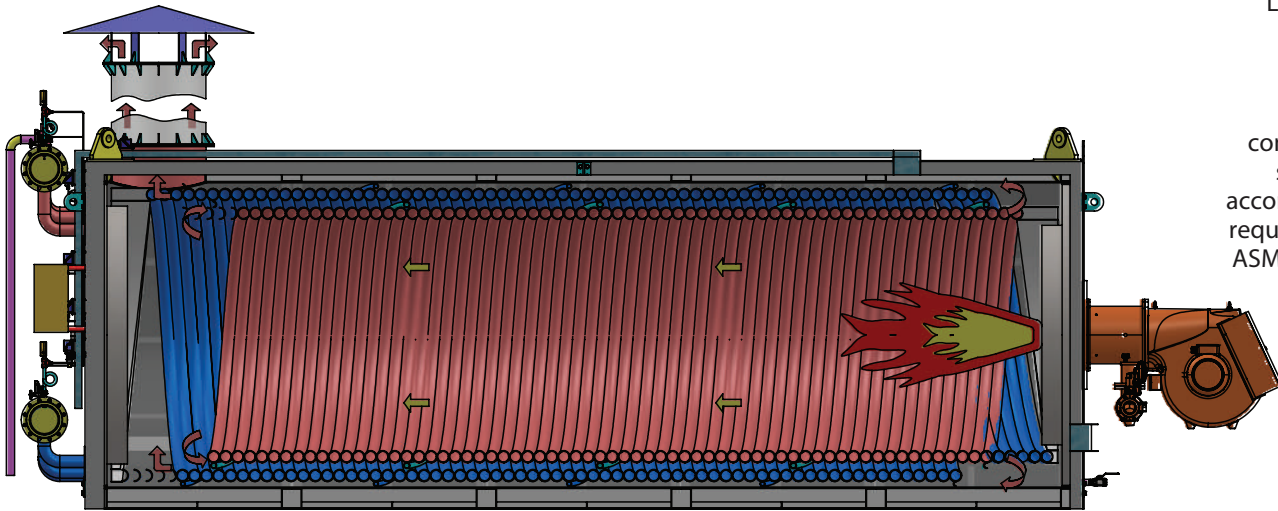
THERMAL OIL HEATER  
Efficiency, Reliability and Durability

Capacities from from 500 - 7000kW  
Pressure max 8 Bar



- High performance
- Easy operation
- High safety level
- Easy maintenance

## SECTION VIEW



Inspected by  
LLOYDS, SGS

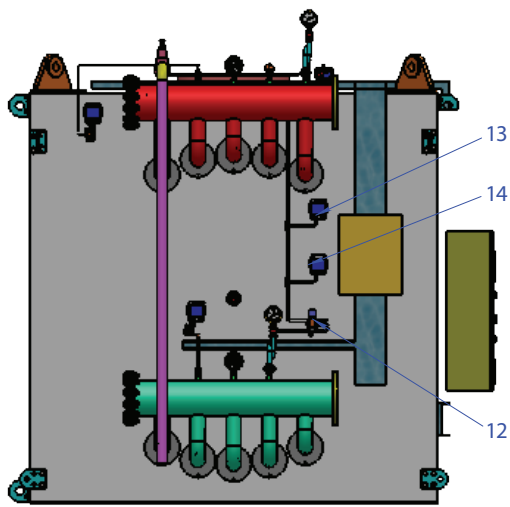


Designed,  
constructed and  
stamped in  
accordance with the  
requirements of the  
ASME Boiler Codes.

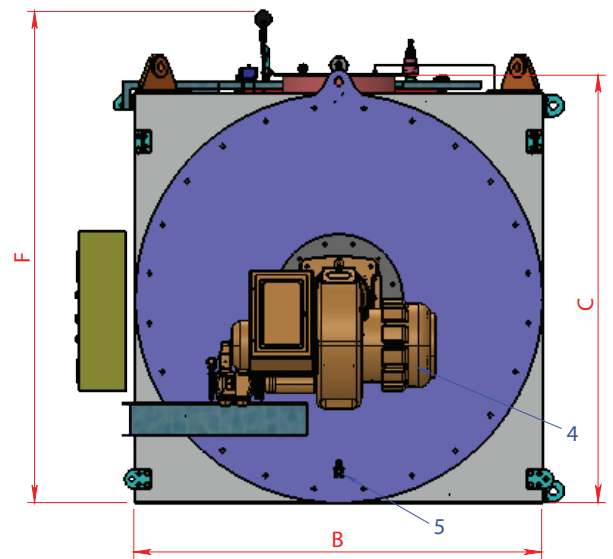
## TECHNICAL DATA

MODEL	Output	Design Pressure	Dimensions (mm)			Connections		
			A	B	C	Flow & Return	Safety Vent	Flue OD
TOH500	500	8	1265	3495	1370	DN80	DN25	DN250
TOH750	750	8	1265	4000	1370	DN100	DN32	DN300
TOH1000	1000	8	1790	4510	1790	DN100	DN40	DN400
TOH1500	1500	8	2000	5450	2125	DN125	DN40	DN400
TOH1750	1750	8	2200	5600	2300	DN125	DN40	DN400
TOH2000	2000	8	2225	6165	2330	DN125	DN40	DN400
TOH2500	2500	8	2225	6735	2330	DN125	DN50	DN500
TOH3000	3000	8	2225	6735	2330	DN125	DN50	DN500
TOH3500	3500	8	2225	7505	2360	DN150	DN50	DN600
TOH4000	4000	8	2225	7505	2360	DN150	DN50	DN600
TOH5000	5000	8	2565	9270	2670	DN200	DN65	DN600
TOH6000	6000	8	3110	10000	3420	DN200	DN65	DN750
TOH7000	7000	8	3110	10000	3420	DN200	DN65	DN750

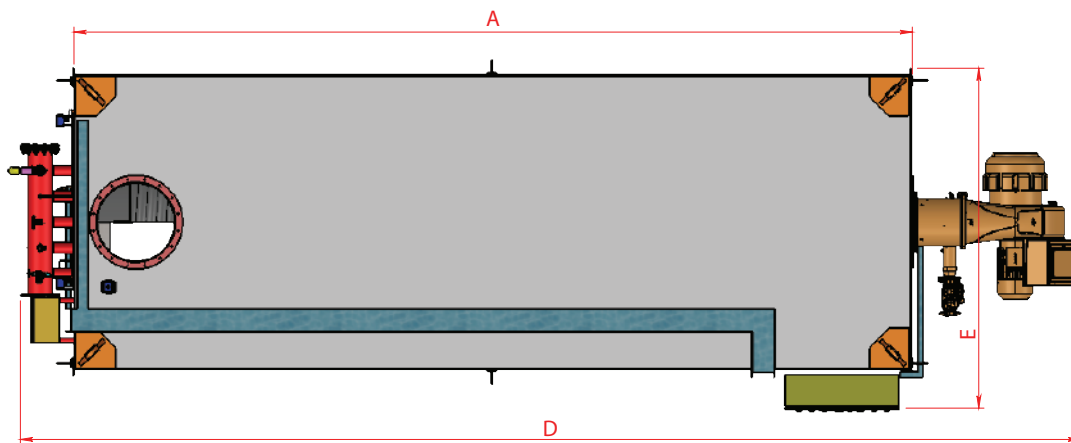
# TECHNICAL DRAWINGS



BACK VIEW



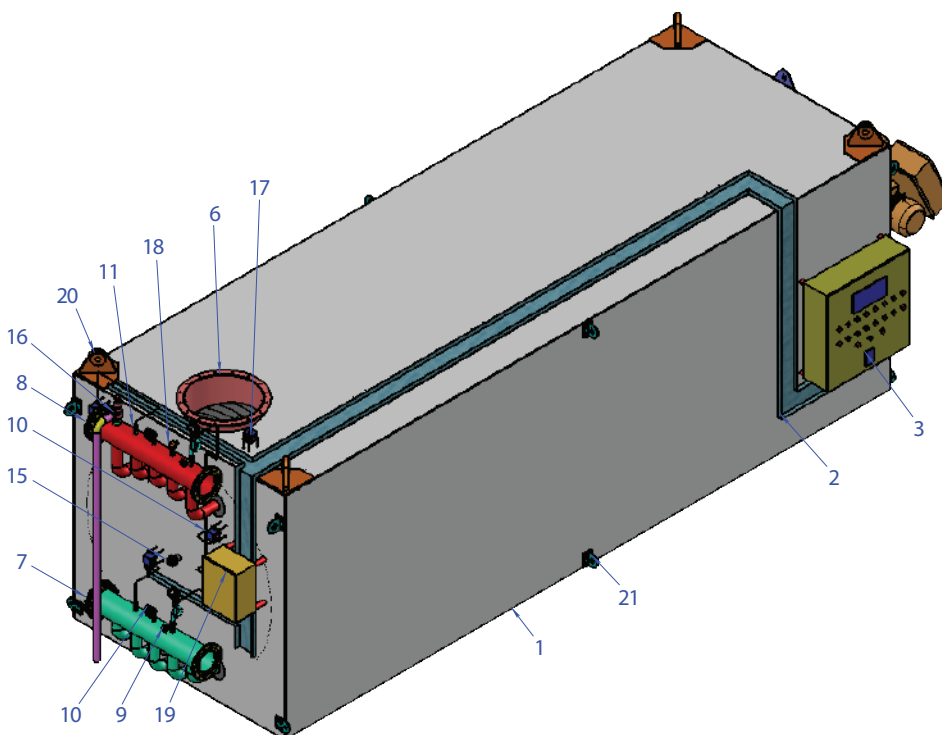
FRONT VIEW



TOP VIEW

## ANNOTATION:

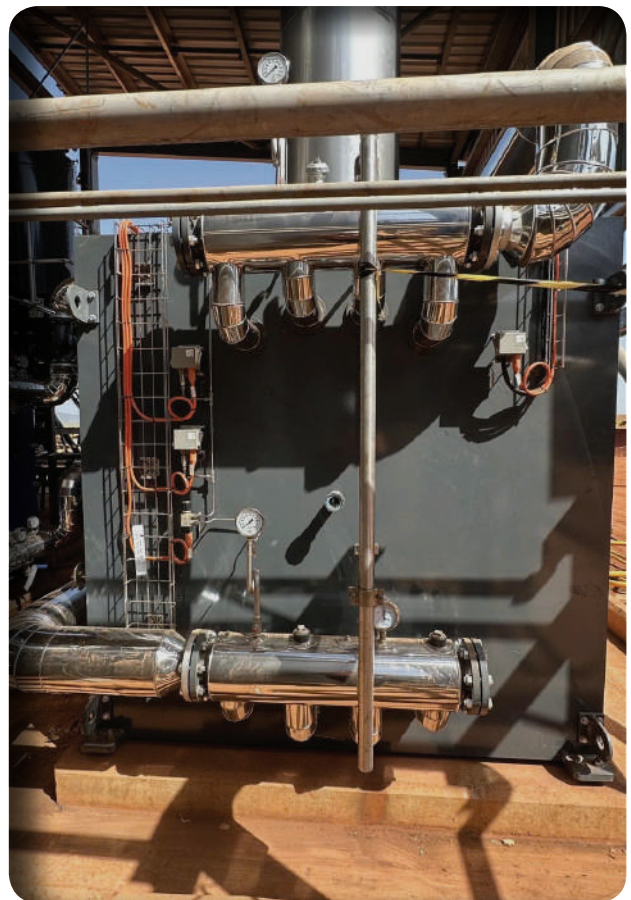
1. Thermal oil heater
2. Cable tray
3. Control panel
4. Burner
5. Condensate valve
6. Exhaust flue
7. Oil inlet piping
8. Oil outlet piping
9. Syphon loop & pressure gague
10. Temperature gague
11. Over temp switch
12. Differential pressure switch
13. High oil pressure switch
14. Low oil pressure switch
15. Burner sighting port
16. Safety valve
17. Stack over temp switch
18. RTD
19. Junction box
20. Lifting lug
21. Lashing lug



## PRODUCT OVERVIEW

- Efficient 3 - Pass Design
- Flexibility - Capable of burning natural gas, fuel oil, digester gas, hydrogen, & various other gaseous fuels
- ASME Code Constructed & Stamped
- Competitively Priced, Easily Maintained, Designed for Efficiency
- Large Furnace Volume for Ultimate Combustion Efficiency
- Low Heat Release
- Factory Insulated - 3" Mineral Wool
- Factory Jacketed & Stainless Steel
- Easy to maintaining and operating
- Ample Waterside Clean - Out Openings
- Fully Automatic Operation
- Wet Back Construction
- Factory Test Fired
- Flame Observation Ports Front & Wetback

These steam boilers provide a large thermal mass and can therefore supply a significant volume of steam draw-off whilst still maintaining a stable operating environment. In essence, these firetube steam boilers are excellent for any industry that needs high quantities of steam at different times, which when the steam is drawn-off, it won't affect the boilers operations (such as foam manufacturing and abattoirs). All units are factory packaged with operating controls, relief valves, burner and fuel train. Installation is made simple in that only service connections are needed to place in operation. Flexible burner systems are available for firing natural gas, LP gas, #2 oil, heavy oil, or combinations. High density 3" mineral wool insulation assures lower radiant heat loss.



### CONTACT US